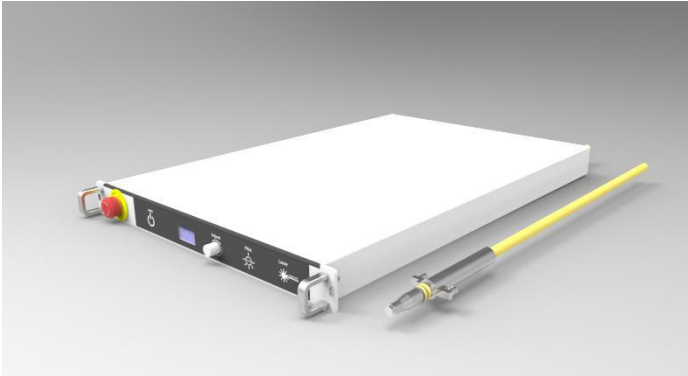


1. features and applications



Han's TianCheng Semiconductor Co.,Ltd., founded in November 2011 in Beijing Development Area, is a subsidiary company of Han's Laser. Han's TianCheng has advanced research, technological infrastructure and experience in the development and production of diode lasers with self-developed technology, especially in fiber coupled laser modules. Han's TianCheng provides high power semiconductor laser products which are widely used in the fields such as material processing, diode-pumped solid-state pumping, fiber laser pumping, laser display, medical application and scientific research

Han's TianCheng dedicates to the development of high brightness fiber coupled diode laser modules with output power from ten to hundreds of watts, and the wavelength from 405nm to 1550nm. We can also provide special wavelength and multi-wavelength products, and other customizing products and OEM services.

Features:

- ◆ Output Power(At the End of the Fiber):
1000W
- ◆ Smallest Fiber Core Diameter:
300 μ m
- ◆ Numerical Aperture:
0.22
- ◆ Wavelength:
905~985nm
- ◆ Fiber Connector:
QBH

Applications:

- ◆ Laser welding
- ◆ Laser cladding
- ◆ Sheet metal cutting
- ◆ The scientific research

2. Typical Device Performance (25°C)

	Symbol	Typical Value	Unit
Optical			
CW Output Power	P_{op}	>1000	W
Center Wavelength	λ	905~985	nm
Stability Over 24-hour (Cooling-Water $\Delta T = \pm 0.5$ K)		± 2	%
Pilot Laser			
Wavelength	λ	650	nm
Output Power	P_{aim}	5	mW
Electrical Parameters			
Threshold Current	I_{th}	0.7	A
Operating Current	I_{op}	10	A
System input voltage	V_{input}	200~240	V
Alternating current frequency	F_{input}	50/60	Hz
Fiber*			
Fiber Core Diameter	d_{core}	300	μm
Fiber Cladding Diameter	d_{clad}	500	μm
National academician	NA	0.22	-
Fiber Length	L_f	15	m
Fiber armor	\varnothing	13	mm
Fiber Connector	QBH		

* Customized fiber

3. Absolute Ratings

	Min	Max	Unit
Operating Temperature	15	35	°C
Operating Relative Humidity	-	75	%
Storage Temperature	-20	80	°C
Storage Relative Humidity	-	90	%
Coolant Flow Rate	10	15	L/m
Water Temperature	20	25	°C
Cooling water	Pure Water or Deionized water		

4.Package Dimensions (mm)

