

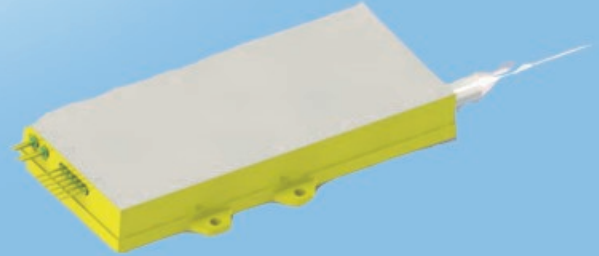


Pumping Source

793nm Diode Laser

Application

Pumping Source for 2 μ m Fiber Laser



	Typical Value						Units
Optical Parameters (25°C)							
Center Wavelength	793						nm
Center Wavelength Tolerance	±3	±3	±3	±3	±3	±3	nm
CW Output Power	5	16	30	40	80	140	W
Spectral Width (90% of Power)	<3.0						nm
Wavelength Shift with Temperature	0.3						nm/°C
Threshold Current	0.7	0.7	0.7	0.7	0.7	0.7	A
Operating Current	6.0	6.0	6.0	6.0	5.0	6.0	A
Operating Voltage	1.9	3.8	7.6	11.3	22.7	34	V
Slope Efficiency	0.9	1.9	3.8	5.7	11.6	17	W/A
Power Conversion Efficiency	44	44	44	44	44	44	%
Fiber Characteristics							
Core Diameter	105						μm
Numerical Aperture	0.22						-
Fiber Length	1-5						m
Fiber Connector ¹	Bare Fiber, SMA905, FC/PC						-
Accessories							
Monitor Photodiode	None	None	None	Optional	Optional	Optional	-
Packaging							
Package Model	R2	T2R	T4R	C5	DK	DK	-
Absolute Ratings							
Operating Temperature	+10~+40						°C
Operating Relative Humidity	<75						%
Storage Temperature	-20~+80						°C
Storage Relative Humidity	<90						%
Lead Soldering Temperature, 10s max	<250						°C

¹. Customized fiber and connector available.