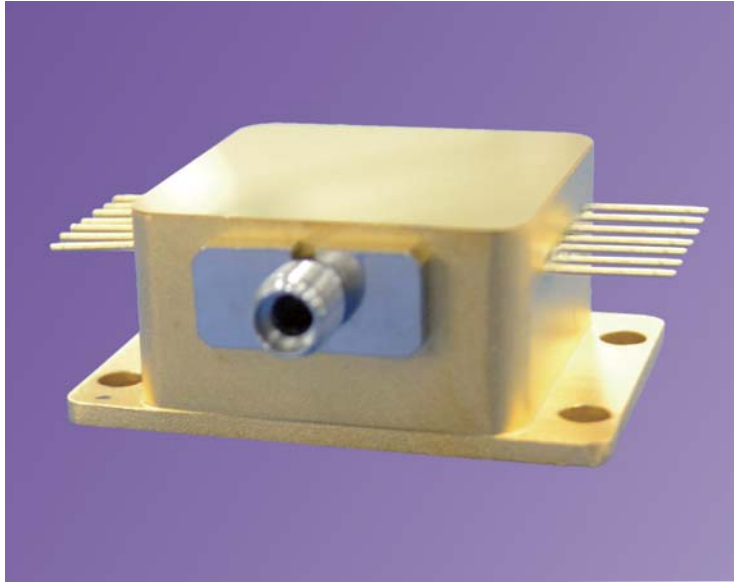


808nm 7W Detachable Laser Diode Module

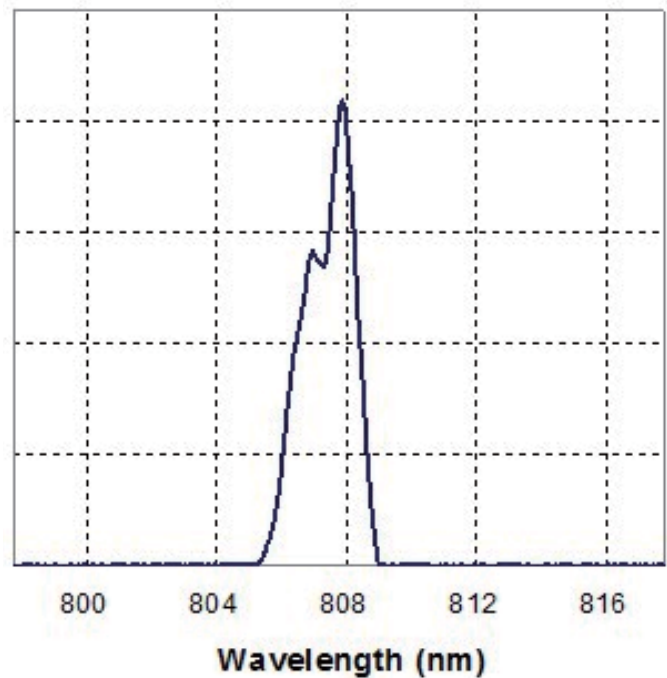
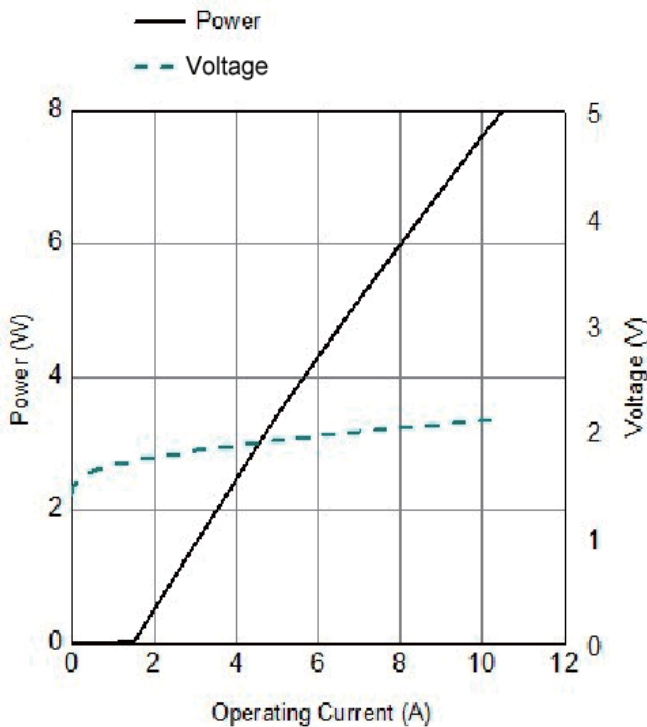
Functions: PD, TEC, Thermistor, Aiming Beam, Fiber Detector

G808-7WD-14HHL-PTFS



Features
Output power: 7W
Wavelength: 808nm, 650nm
Fiber core diameter: 200 μm
0.22NA
Fiber detector
Application
Medical use
Material processing

808nm Characteristics (25°C)



Typical Device Performance (25°C)

Parameter		Symbol	Typical	Unit
			G808-7WD-14HHL-PTFS	
Optical	CW Output Power	P_{op}	7	W
	Center Wavelength	λ_c	$808 \pm 3, 808 \pm 10$	nm
	Spectral Width(90% of Power)	$\Delta \lambda$	<3	nm
	Wavelength Shift with Temperature	$\Delta \lambda / \Delta T$	0.3	nm/°C
Pilot beam	Output Power	P_a	>2	mW
	Wavelength	λ_a	650 ± 10	nm
	Voltage	V_a	2.2, 5.0	V
	Current	I_a	<30	mA
Electrical	Threshold Current	I_{th}	1.6	A
	Operating Current	I_{op}	9	A
	Operating Voltage	V_{op}	1.9	V
	Slope Efficiency	η_{es}	0.8-0.9	W/A
	PD	I_{mo}	0.2-2.0	mA
	TEC Max Current	I_t	6	A
	TEC Max Voltage	V_t	9.8	V
Fiber	Thermistor	R_t	$10 \pm 5\% / 3477$	(K Ω) / β (25°C)
	Fiber Core Diameter	d_{core}	200, 400	μm
	Numerical Aperture	NA	0.22	-
	Connector	-	ST, FC, SMA905	-

Other Parameters

Parameter	Operating Temperature /°C	Storage Temperature /°C	Storage Relative Humidity /%	Lead Soldering Temperature, 10s max/ °C	MTBF/h
Min	10	-20	-	-	10000
Max	30	80	90	250	-

Package Dimensions (mm)

Pin	Function	Pin	Function
1	Case	8	TEC(-)
2	Laser (+)	9	Fiber Detection PDP
3	Thermistor	10	Fiber Detection LED(-)
4	Thermistor	11	Fiber Detection LED(+) Fiber Detection PDN
5	Laser (-)	12	Aiming Beam LD(+)
6	PD (P)	13	Aiming Beam LD(-)
7	PD (N)	14	TEC(+)

