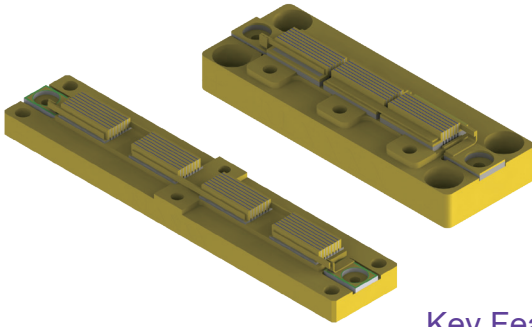


# Conduction Cooling Diode laser Array



AA Series Diode laser Array is developed by RealLight which is used for wide temperature. Its features include high peak power and wide temperature applications.

## Key Features

- ◆ Hard solder package
- ◆ High temperature application
- ◆ High peak power
- ◆ High reliability
- ◆ Dual wavelength integration

## Applications

- Pumping source
- Scientific research

## Technical Specifications

Optical Parameters			
Part Number	R796±3/808±3-Q1800/Q1800-AA01-10*9/10*9	R796±3-Q3600-AA01-10*18	R796±3-Q5600-AA02-10*28
Center Wavelength $\lambda_c$ (nm)	796/808	796	796
Wavelength Tolerance $\delta\lambda_c$ (nm)	±3	±3	±3
Output power of each Bar (W)	200		
Bar Numbers	18		28
Spaces between Bars (mm)	~0.55		~0.65
Spectral Width (FWHM) (nm)	<5		
Slope Efficiency of each Bar (W/A)	>1.1		
Fast Axis Divergence Angle (FWHM) (°)	40		
Slow Axis Divergence Angle (FWHM) (°)	10		
Temperature Drift of Wavelength (nm/°C)	~0.3		
Electrical Parameters			
Conversion Efficiency (%)	>50		
Threshold Current $I_{th}$ (A)	<30		
Operating Current $I_{op}$ (A)	<230		
Operating Voltage $V_{op}$ of each Bar (V)	<2.1		
Duty Cycle (%)	<0.7		
Pulse Width ( $\mu s$ )	<300		
Repetition Rate (Hz)	<30		
Environment Parameters			
Operating Temperature (°C)	0~60		
Storage Temperature (°C)	0~80		

Notes: 1. Inquire RealLight for other parameters or shapes, OEM is accepted.

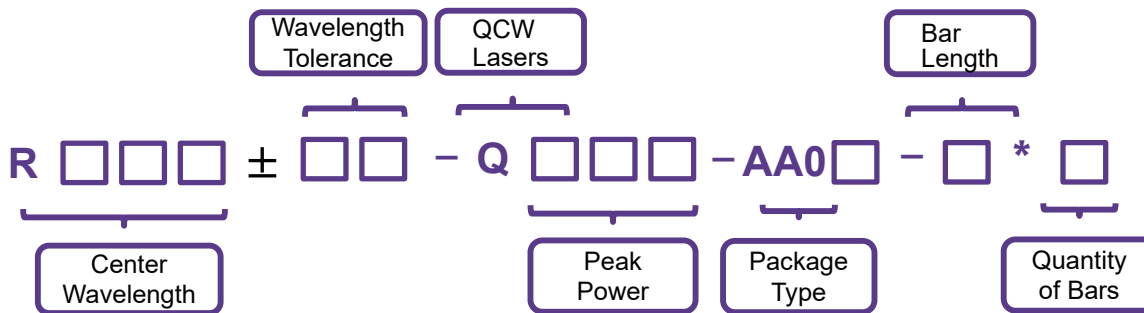
2. Service life of device may be shorten if exceed working range.

3. Operating and storage environment must be free of dew, the cleanliness must reach 10,000 grade.

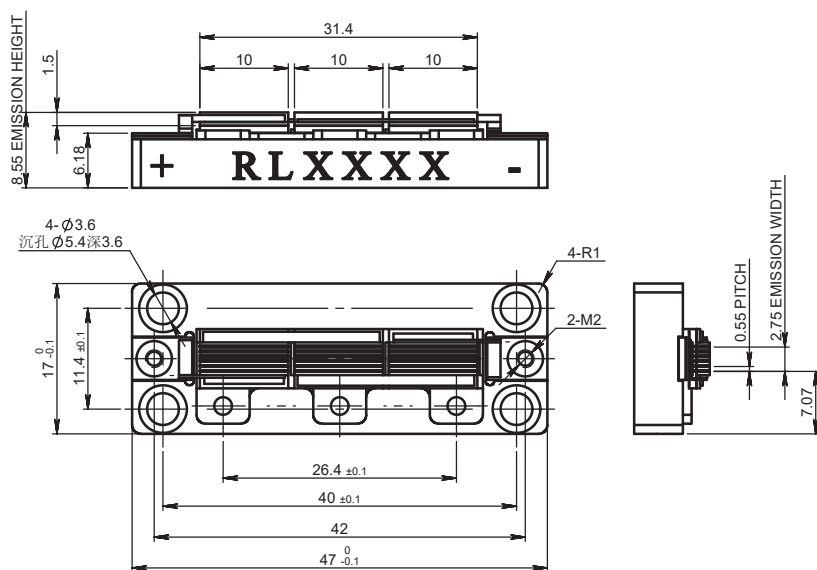
4. QCW, 200 $\mu s$ , 30Hz, 25°C.

5. As products are constantly being updated, the right of final interpretation of technical specifications or illustrations in datasheet belongs to RealLight.

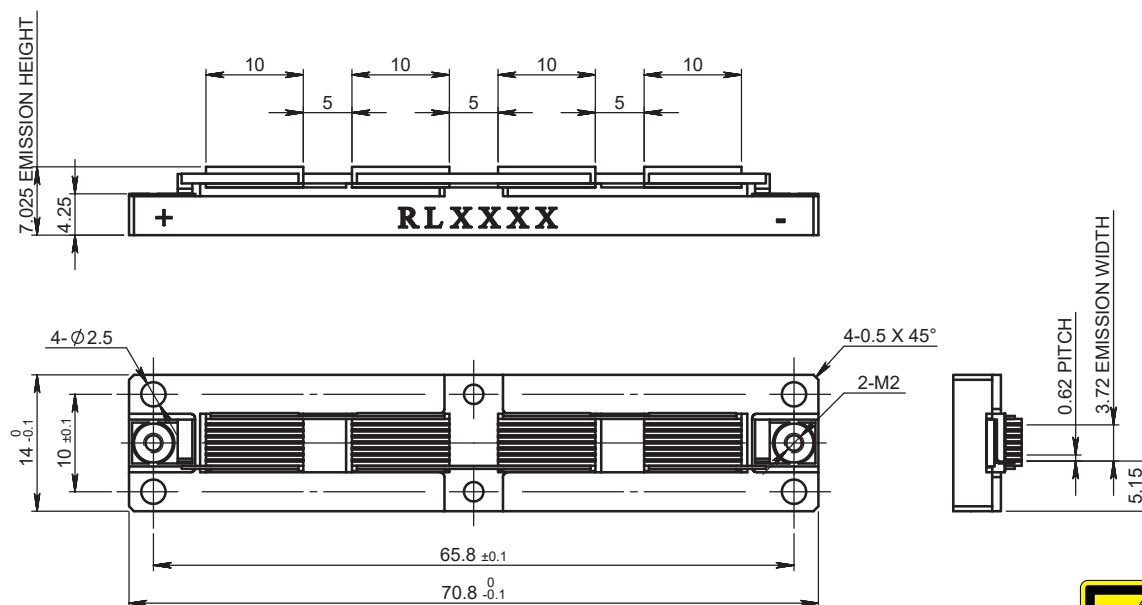
## Part Numbering Schema



## Mechanical Drawings (in mm)



AA01



AA02

