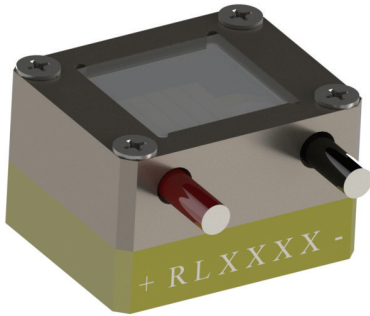


# GS11 Series Diode laser

## Vertical stacks



GS11 packaged diode laser array is developed by RealLight independently, it realized to be used in ms-level applications from us-level. This laser component integrates sealed optical windows with dust proof function, which is available to monitor temperature, and can meet with the customers' applications in different environments.

### Key Features

- ◆ AuSn solder for packaging
- ◆ High conversion efficiency
- ◆ High peak power
- ◆ High reliability

### Applications

- Illumination
- Pumping source
- Scientific research

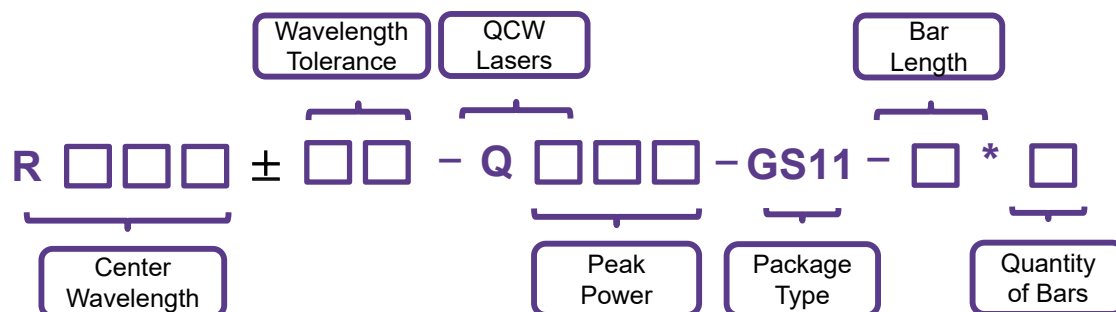
### Technical Specifications

Optical Parameters	
Part Number	R808±10-Q480-GS11-10*4
Center Wavelength $\lambda_c$ (nm)	808
Wavelength Tolerance $\delta\lambda_c$ (nm)	±10
Output power of each Bar (W)	120
Bar Numbers	4
Spaces between Bars (mm)	1.65
Spectral Width (FWHM) (nm)	<5
Slope Efficiency of each Bar (W/A)	>1.1
Fast Axis Divergence Angle (FWHM) (°)	40
Slow Axis Divergence Angle (FWHM) (°)	10
Temperature Drift of Wavelength (nm/°C)	~0.3
Electrical Parameters	
Conversion Efficiency (%)	>50
Threshold Current $I_{th}$ (A)	<15
Operating Current $I_{op}$ (A)	<130
Operating Voltage $V_{op}$ of each Bar (V)	<2
Duty Cycle (%)	<2
Pulse Width ( $\mu s$ )	<3000
Repetition Rate (Hz)	<100
Environment Parameters	
Operating Temperature (°C)	20~35
Storage Temperature (°C)	0~55

Notes:

1. Contact us if different parameters are required;
2. Do not operate it exceeding normal conditions, otherwise the life time will probably be decreased;
3. Make sure that there is no condensation in operating or storage environment.

## Part Numbering Schema



## Mechanical Drawings (in mm)

